

# HOME TWO

A Four Bedroom  
Detached Family Home  
with Two Ensuites

A spacious classically proportioned detached home with a centrally positioned front door with a fanlight over, surmounted by a traditional porch with a lead roof and with

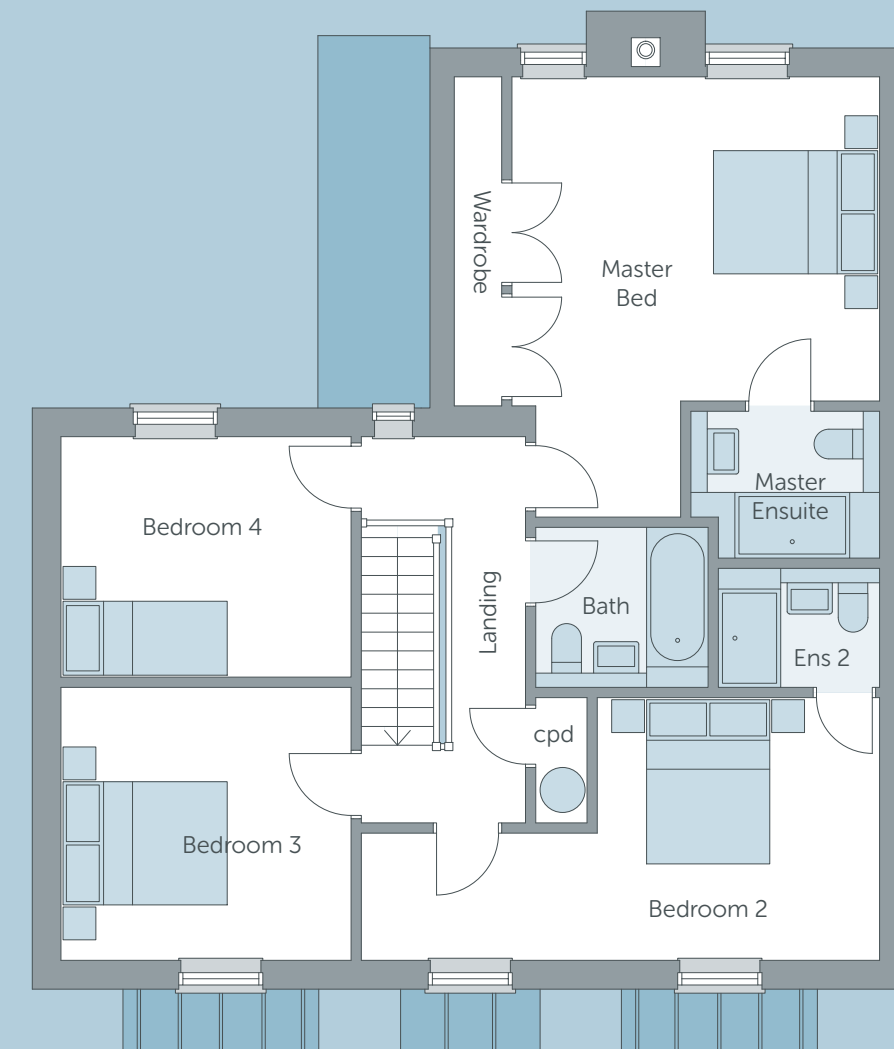
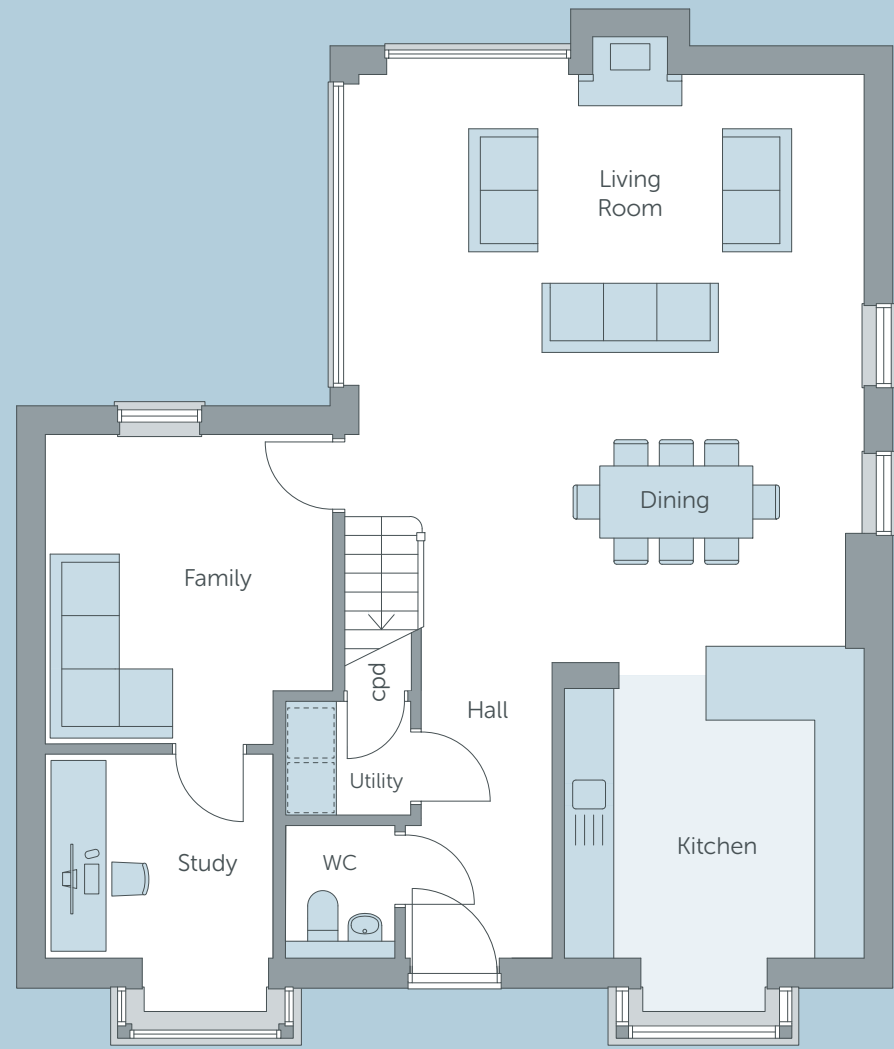
rectangular projecting bay windows on either side with three vertically hung sliding sashes to the first floor. Home 2 is constructed in brick under a traditional plain clay tiled roof.

The property has a landscaped front garden, a double garage and further car parking available on the drive to the front of the house and an enclosed rear garden with patios and footpaths.





# HOME TWO



## G

	METRIC	IMPERIAL	FEATURES
Living / Dining	6.75m x 6.1m †	22'2" x 20'†	🔥 Wood Burning Stove
Kitchen	4.1m † x 3.6m	13'5" † x 11'10"	
Family Room	3.6m x 3.4m	11'10" x 11'2"	
Study	3.1m † x 2.7m	10'2" † x 8'9"	
Utility Room	1.7m x 1.5m	5'6" x 5'	
Cloak Room	1.8m x 1.3m	6' x 4'3"	

† - Maximum Length

## F

	METRIC	IMPERIAL	FEATURES
Master Bedroom	5.2m † x 5.1m*	17'† x 16'8"*	🛏️ Ensuite
Bedroom 2	6.1m † x 3.1m †*	20'† x 10'2" †	🛏️ Ensuite
Bedroom 3	3.4m x 3.2m	11'2" x 10'6"	
Bedroom 4	3.4m x 2.9m	11'2" x 9'6"	
Family Bathroom			

† - Maximum Length | \* - Does not include Ensuite