

# HOME THREE

A Four Bedroom  
Detached Family Home  
with Two Ensuites

A split-level "upside down" house of a contemporary design with an upper level balcony overlooking the living areas on the lower level. It is constructed mainly in brick with

panels of grey stained horizontal weatherboarding on the front and rear elevations under a traditional plain tiled roof.

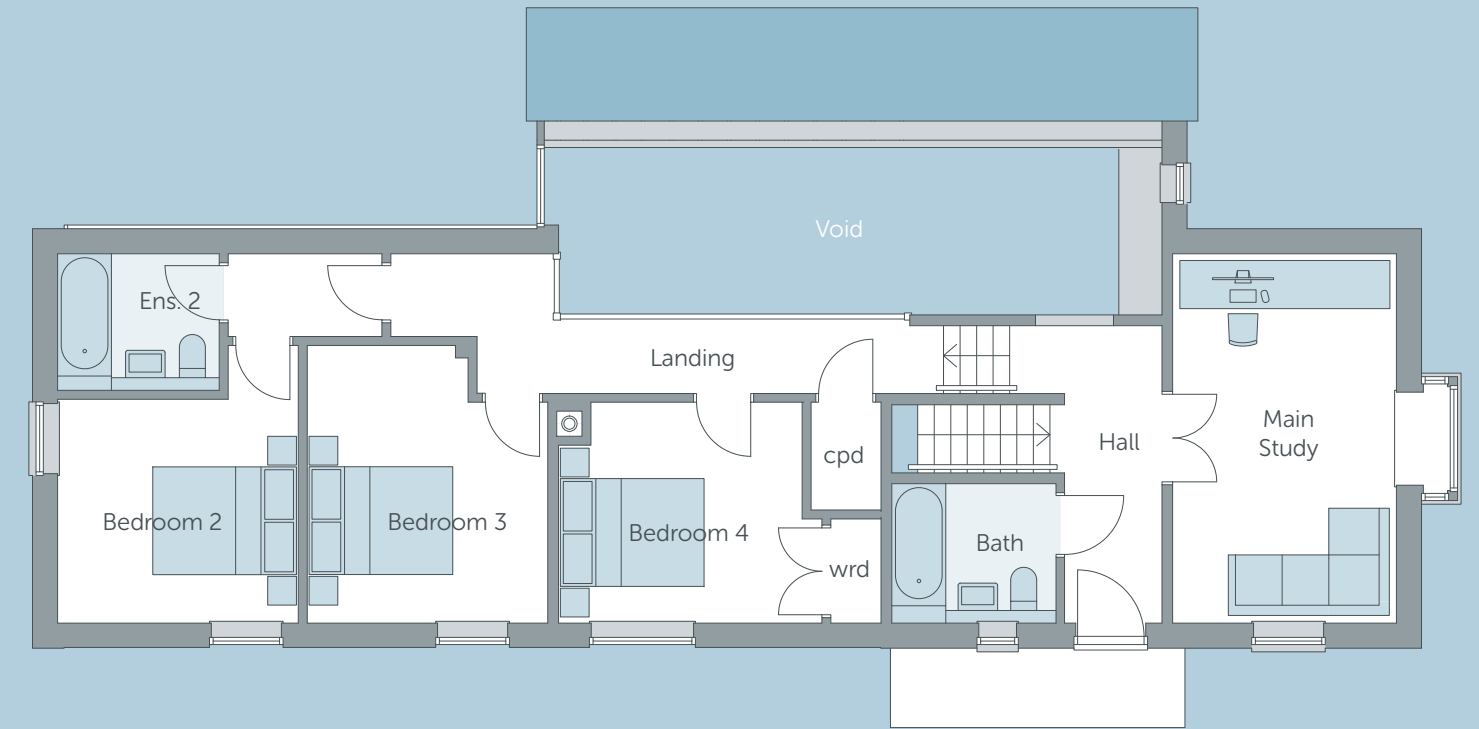
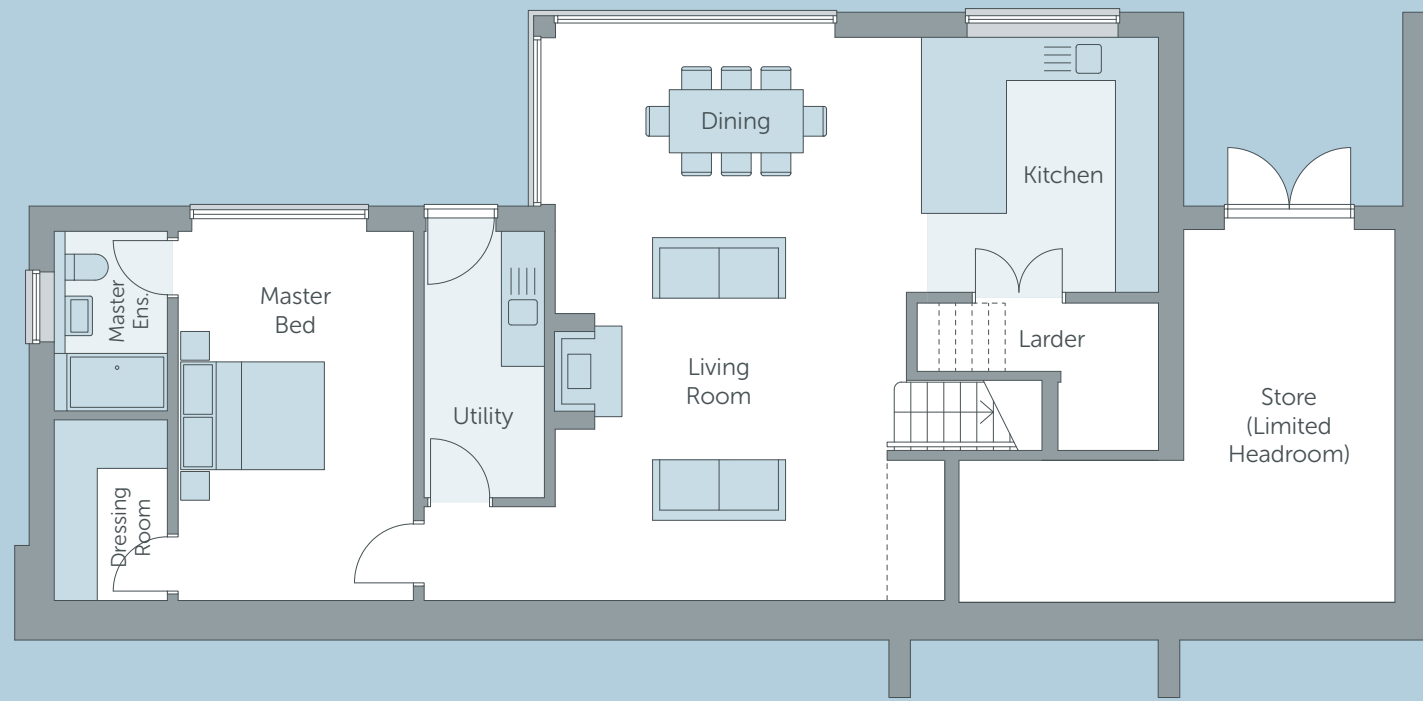
The property has a landscaped front

garden, a double garage with further car parking available on the drive to the front of the house and an enclosed rear garden with patios and footpaths.





# HOME THREE



## LG

	METRIC	IMPERIAL	FEATURES
LIVING / DINING / KITCHEN	8.3m † x 7.6m †	27'3" † x 24'11" †	🔥 Wood Burning Stove
LARDER	3.3m x 2 m	10'10" x 6'7"	
UTILITY ROOM	3.6m x 1.6m	11'10" x 5'3"	
STORE	5m x 2.8m	16'5" x 9'2"	
MASTER BEDROOM	5.1m x 4.9m †	16'8" x 16'0" †	🛀 Ensuite 🧥 Dressing

† - Maximum Length | † - Dimensions Include Ensuite & Dressing Room

## G

	METRIC	IMPERIAL	FEATURES
MAIN STUDY	5m x 3m	16'5" x 9'10"	
BEDROOM 2	5m x 4.9m	16'5" x 16'0"	🛀 Ensuite
BEDROOM 3	3.7m † x 3.2m	18' † x 10'3"	
BEDROOM 4	4.8m x 3m †	12'2" x 9'10" †	
FAMILY BATHROOM			

† - Maximum Length



# HOME THREE

