

# HOME FOUR

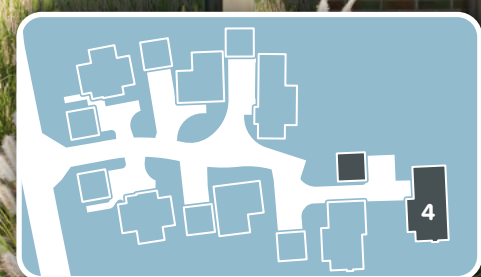
A Four Bedroom  
Detached Family Home  
with Two Ensuites

Constructed mainly in brick with panels of grey stained vertical boarding with a projecting brick gable to the front elevation and an over-sailing roof creating a large open sided

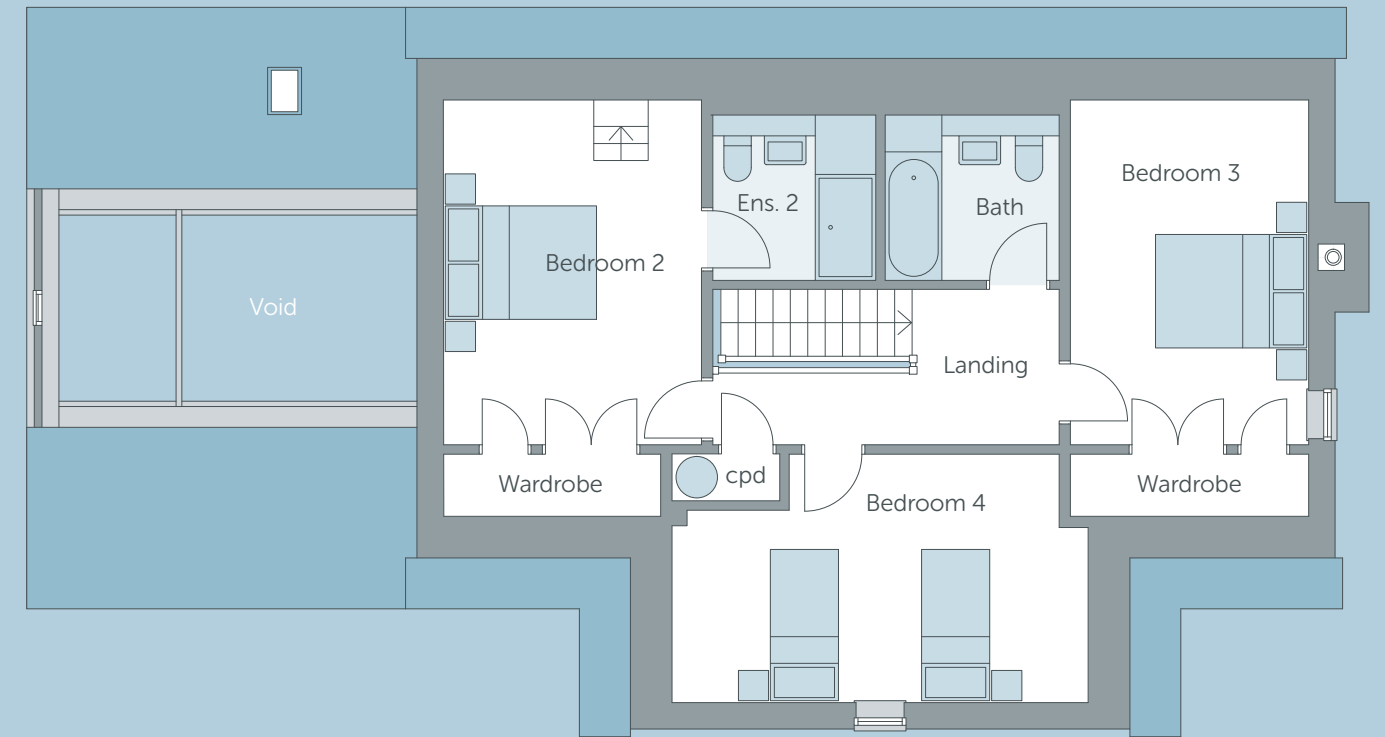
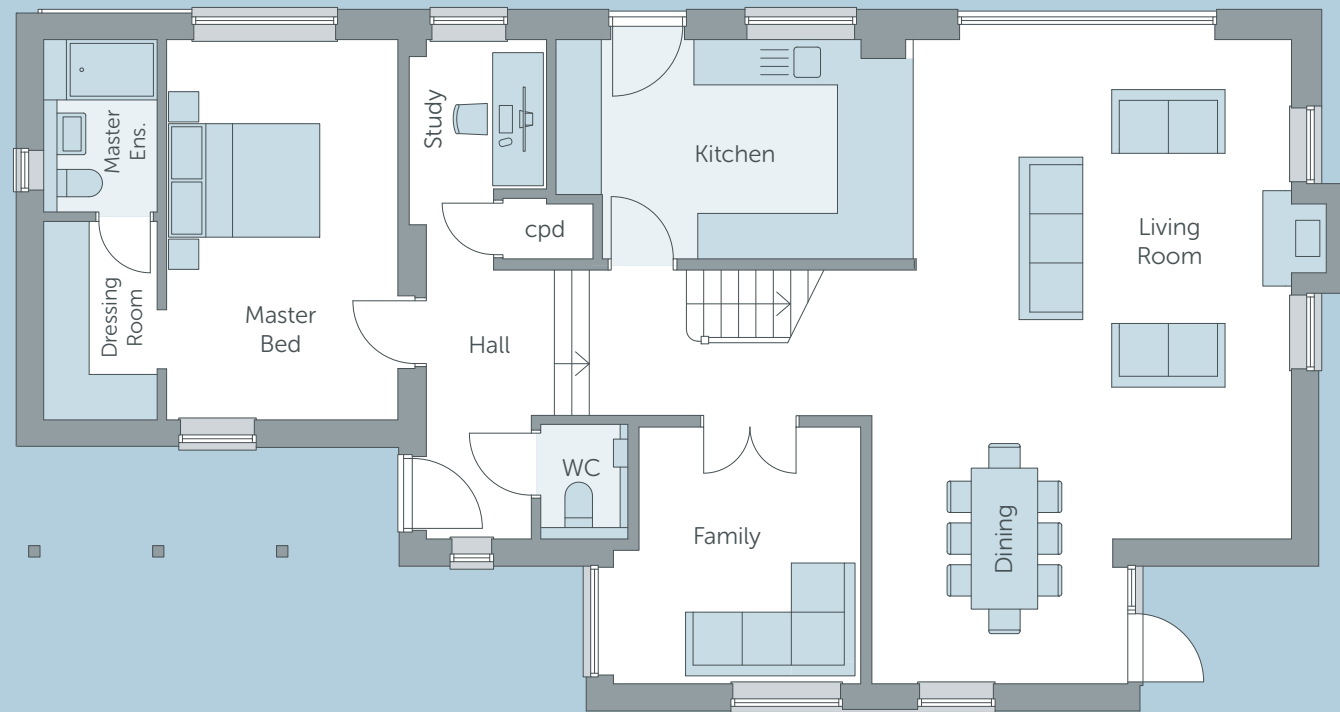
porch above the front door. The rear elevation is predominantly finished in a grey weatherboarding, all under a traditional plain tiled roof.

The property has a landscaped

front garden and an enclosed rear garden with patios and footpaths. The double garage has a pyramid clay tiled roof, surmounted by a cupola and a gated front drive.



# HOME FOUR



## G

	METRIC	IMPERIAL	FEATURES
LIVING / DINING	8.5m † x 7.5m †	27'10" † x 24'7" †	🔥 Wood Burning Stove
FAMILY ROOM	3.4m † x 3.3m	11'2" † x 10'10"	
KITCHEN	4.5m † x 2.8m †	14'9" † x 9'2" †	
STUDY	2.3m x 1.8m	7'6" x 5'10"	
MASTER BEDROOM	4.8m x 4.6m †	15'9" x 15'1" †	🛀 Ensuite 🧥 Dressing

† - Maximum Length | ‡ - Dimensions Include Ensuite & Dressing Room

## F

	METRIC	IMPERIAL	FEATURES
BEDROOM 2	5.3m † x 3.3m †	17'4" † x 10'3" †	🛀 Ensuite
BEDROOM 3	5.3m † x 3m	17'4" † x 9'10"	
BEDROOM 4	5.4m † x 3.1m †	17'8" x 10'2"	
FAMILY BATHROOM			

† - Maximum Length

HOME  
FOUR

