

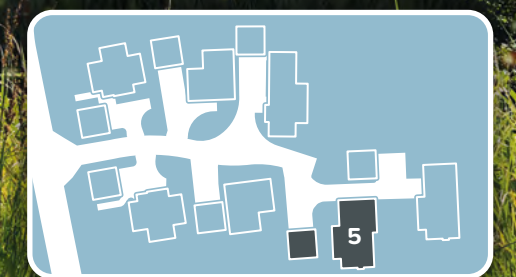
HOME FIVE

A Four Bedroom
Detached Family Home
with Two Ensuites

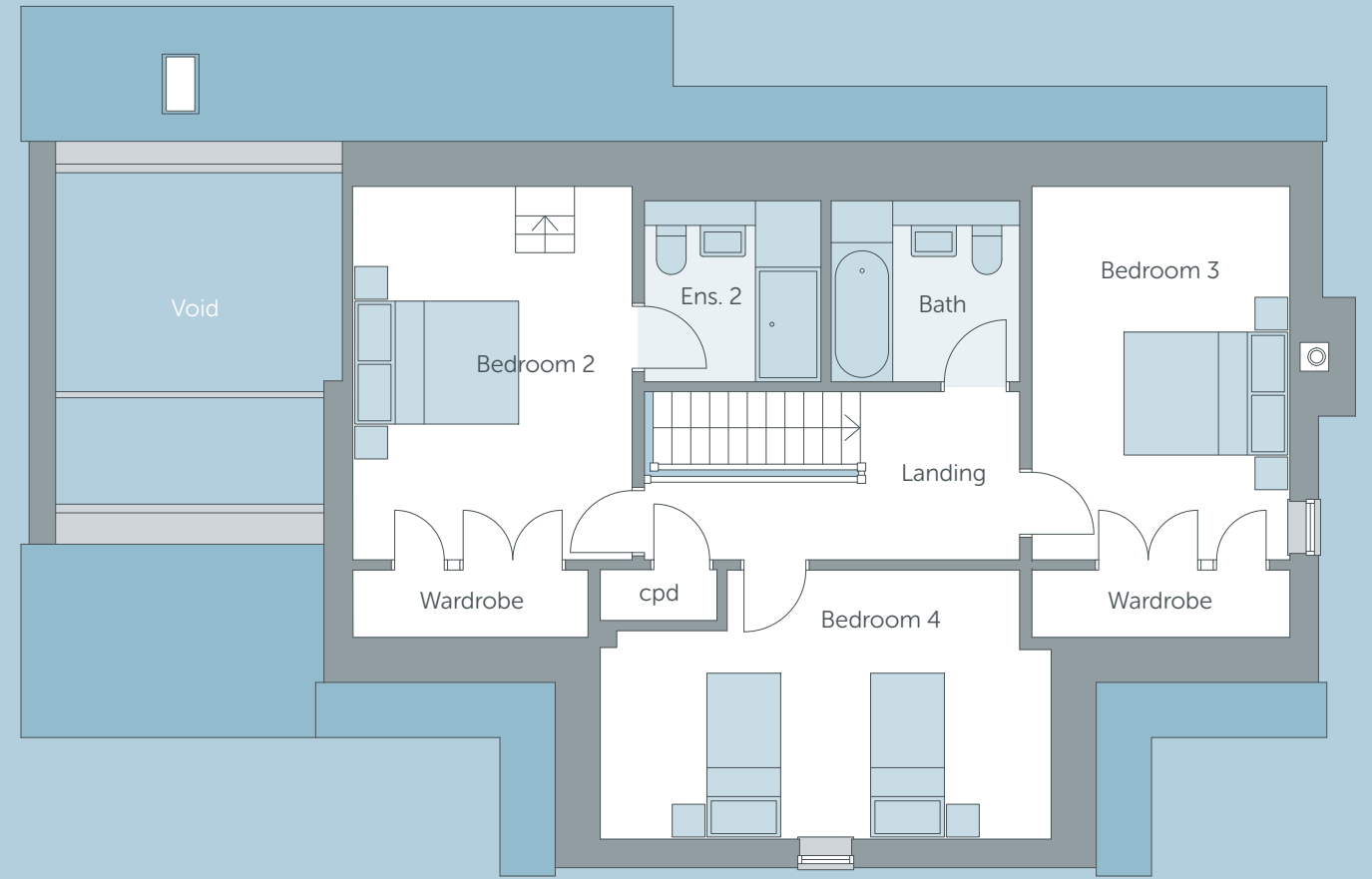
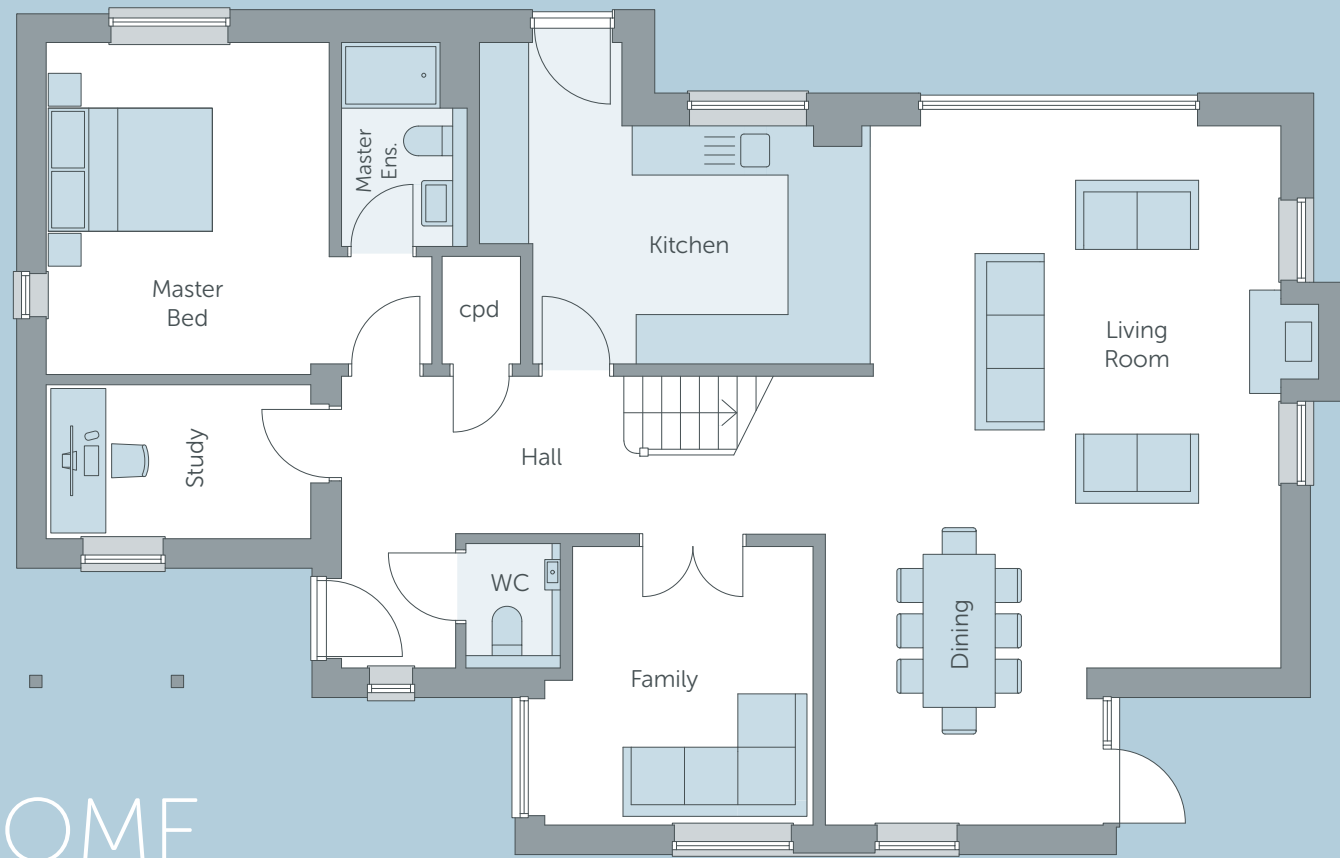
Constructed mainly in brick with a brick gable to the front elevation and an over-sailing roof creating a large open sided porch above the front door. The rear elevation

is predominantly finished in a grey weatherboarding giving it an appearance reminiscent of a barn all under a traditional plain tiled roof. The property has a landscaped

front garden, a double garage and further car parking available on the drive to the front of the house and an enclosed rear garden with patios and footpaths.



HOME FIVE



G

	METRIC	IMPERIAL	FEATURES
LIVING / DINING	8.4m † x 7.5m †	27'7" x 24'7" †	🔥 Wood Burning Stove
FAMILY ROOM	3.3m † x 3.3m	10'10" † x 10'10"	
KITCHEN	4.6m † x 3.9m †	15'1" † x 12'9" †	
STUDY	3.2m x 1.8m	10'6" x 5'10"	
MASTER BEDROOM	5m x 3.9m †	16'5" x 12'9" †	🛀 Ensuite 🧥 Dressing

† - Maximum Length | ‡ - Dimensions Include Ensuite

F

	METRIC	IMPERIAL	FEATURES
BEDROOM 2	5.3m † x 3.3m †	17'4" † x 10'10" †	🛀 Ensuite
BEDROOM 3	5.3m † x 3.1m †	17'4" † x 10'2" †	
BEDROOM 4	5.3m † x 3.2m †	17'4" † x 10'6" †	
FAMILY BATHROOM			

† - Maximum Length | * - Does not include Ensuite

HOME
FIVE

