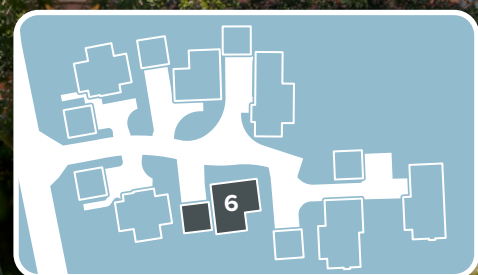


HOME SIX

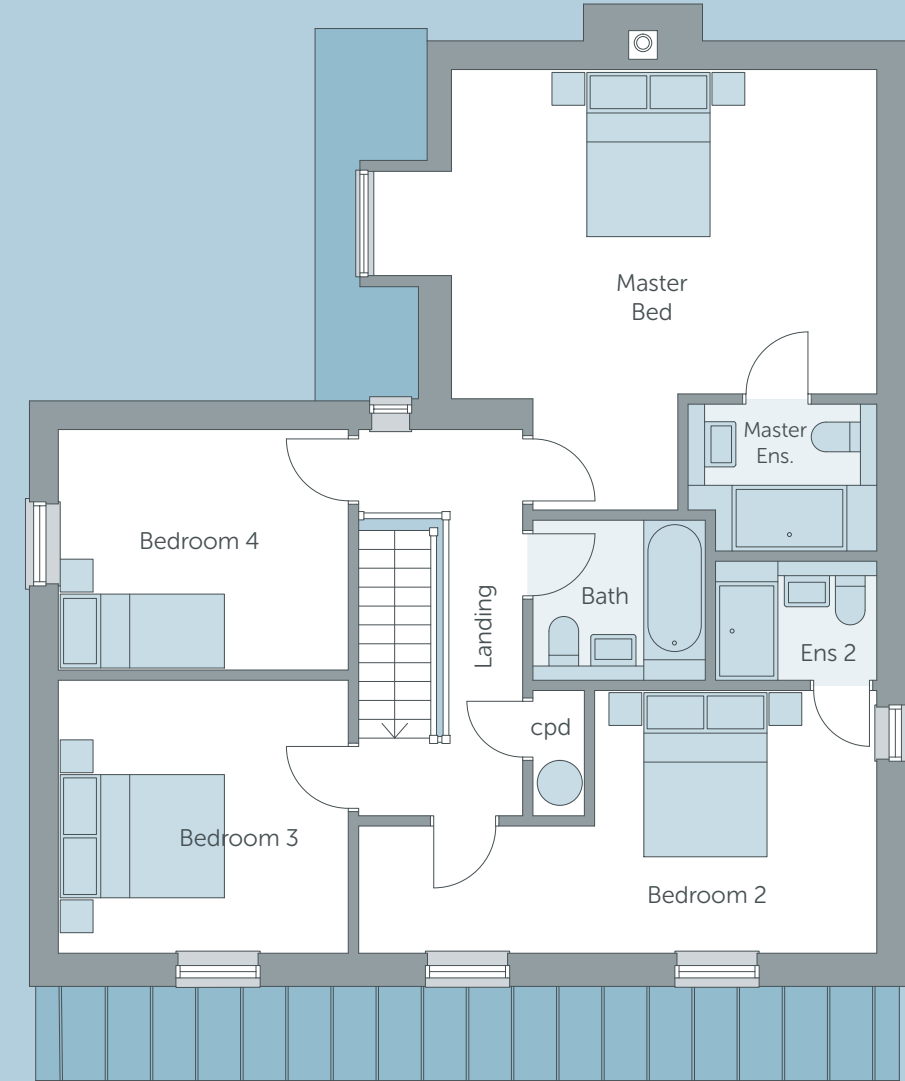
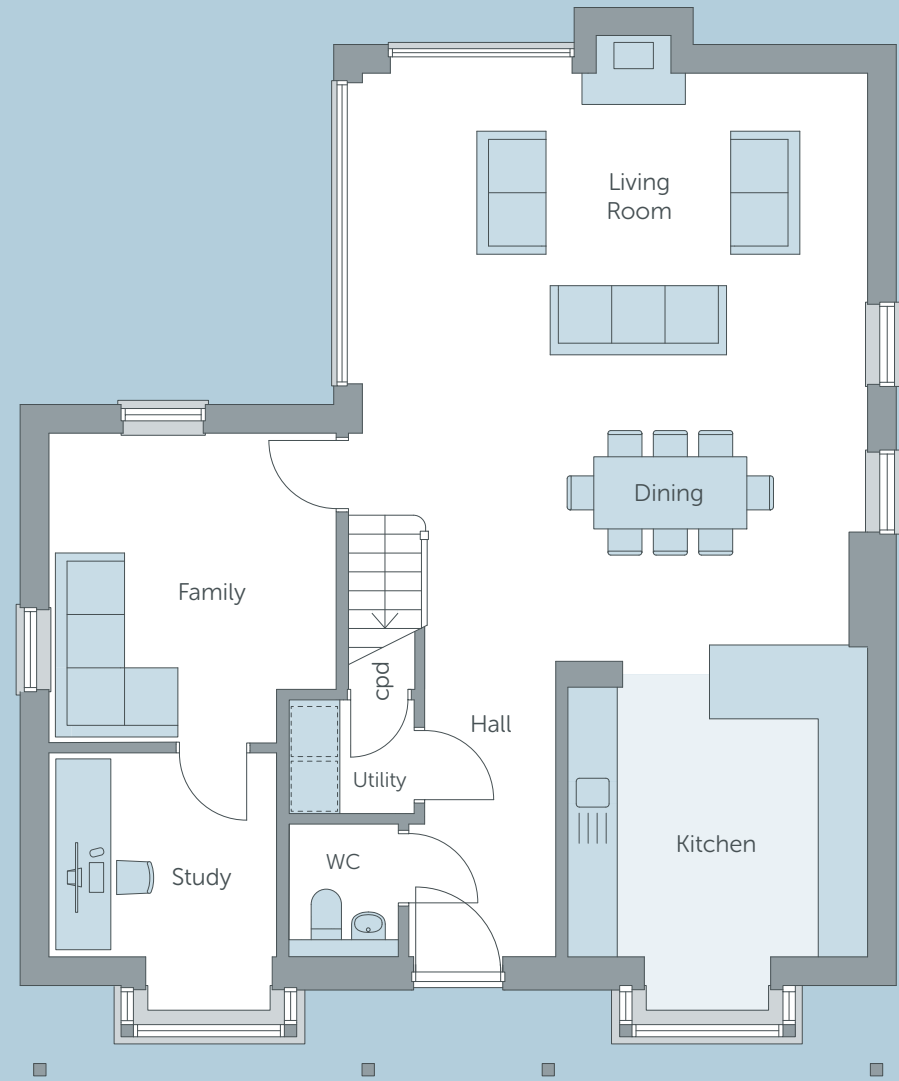
A Four Bedroom
Detached Family Home
with Two Ensuities

A spacious classically proportioned home, with a colonial style. It has a centrally positioned front door with a fanlight over, with rectangular projecting bay windows on either side, surmounted by a veranda to

the ground floor, with three vertically hung sliding sashes to the first floor and is constructed in brick with grey stained timber weatherboarding to the front elevation under a traditional plain clay tiled roof.



HOME SIX



G

	METRIC	IMPERIAL	FEATURES
LIVING / DINING	6.75m x 6.1m †	22'2" x 20' †	🔥 Wood Burning Stove
KITCHEN	4.1m † x 3.6m	13'5" † x 11'10"	
FAMILY ROOM	3.6m x 3.4m	11'10" x 11'2"	
STUDY	3.1m † x 2.7m	10'2" † x 8'9"	
UTILITY ROOM	1.7m x 1.5m	5'6" x 5'	
CLOAK ROOM	1.8m x 1.3m	6' x 4'3"	

† - Maximum Length

F

	METRIC	IMPERIAL	FEATURES
MASTER BEDROOM	5.2m † x 5.1m *	17' † x 16'8" *	🛁 Ensuite
BEDROOM 2	6.1m † x 3.1m †*	20' † x 10'2" †	🛁 Ensuite
BEDROOM 3	3.4m x 3.2m	11'2" x 10'6"	
BEDROOM 4	3.4m x 2.9m	11'2" x 9'6"	
FAMILY BATHROOM			

† - Maximum Length | * - Does not include Ensuite